

The original All-in-One®  
Software Suite for  
Case and Financial Management

Back Office Product Sheet



## General Ledger

### Product Features

- Easily produce financial statements for various levels including office, department, attorney, and account
- Financial statements are available in detailed or consolidated format
- User-defined chart of accounts gives users flexibility when designing financial statements
- On-line search for account balances and details gives users up-to-the-minute financial status
- Robust tools provide for reformatting reports to Excel, PDF, Word and more
- Reports include income statements, balance sheets, funds flow, and supporting schedules with comparisons to budget and prior periods
- Supports recurring journal entries
- Supports redistribution of overhead expenses to profit centers

PerfectLaw® General Ledger helps you make well-informed decisions by offering you complete access to and control over all of your firm's financial information. PerfectLaw's advanced technology enables you to use multi-segmented account numbers and retain historical records, including budgets and prior years' comparisons. It supports cash, modified cash, accrual or dual cash/accrual accounting. Ample functionality and reporting tools allow you to post to both your client matter and general ledgers, distribute overhead across profit centers, obtain real-time financial statements, and sort financial data by individual profit centers or for the entire firm. PerfectLaw® provides financial analysts with the utmost sophistication when it comes to having the ability to sort data, obtain reports, analyze trends, forecast financials and perform cash flow projections.

### Benefits

- Easily identify under-performing profit centers
- Analysis is simple with robust reporting and comparison tools
- Wildcard setup means no additional maintenance is required when new profit centers are added

### Functions

- Multi-segment account numbers
- Historical reporting
- Maintain budgets - by account, by accounting period, by year
- Record accounts receivable and accounts payable ledger postings
- Distribute overhead expenses among profit centers
- Real-time financial statements
- Sort financial data by individual profit centers or for the entire firm
- Cash, modified cash, accrual, or dual cash/accrual accounting

**PERFECTLAW®**  
**ALL-IN-ONE® SOFTWARE**

www.perfectlaw.com  
1.800.749.6200

PerfectLaw® allows users to view financial reports and drill down to the General Journal level.

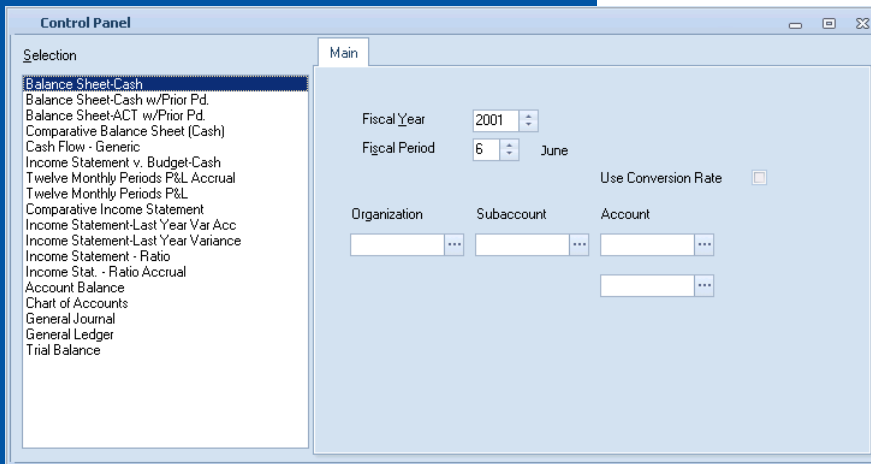
### Synergy

- PerfectLaw's Management Reporting System provides numerous attorney production reports that reconcile financial totals
- All financials are automatically stored in PerfectLaw® Document Management for search and comparison years later
- Journals from outside payroll services can be imported into the General Ledger, eliminating manual entry

Page 1  
Run: 12/31/2000 6:27:26 PM

**Bond, Derham, Levy & Delane**  
Statement of Cash Basis Income and Expenses  
Period Activity

	January	February	March	April	May	June	July	August	September	October	November	December	Total
<b>REVENUE:</b>													
FEE INCOME	244,399	27,508	(4,698)	302,237	102,691	155,050	265,723	67,353	199,802	185,368	17,315	65,868	1,628,517
FEE INCOME - B.W. BOND	23,213		1,485	34,021	54,225	4,059	85,105	4,748	39,550	55,906	3,720	40,043	347,073
FEE INCOME - K.A. DERHAM	4,165			16,221	11,245	10,941	28,574	18,983	20,350	31,932	8,340	16,535	167,285
FEE INCOME - R.E. LEVY	12,206			22,042	25,017	3,290	4,039	888	6,600	19,270	3,738	2,338	99,426
FEE INCOME - C.M. DELANE	33,445	968	55	36,534	1,474		28,944	19,933	19,910	10,620			151,583
COST RECOVERY INCOME-FAX, PHONE, CC						2,863	2,863	1,635	2,314	1,646	3,337	1,724	16,381
COST RECOVERY INCOME-FAX, PHONE, CC													
INTEREST INCOME													
<b>TOTAL INCOME</b>	<b>317,427</b>	<b>28,476</b>	<b>(3,158)</b>	<b>411,155</b>	<b>194,652</b>	<b>175,202</b>	<b>416,247</b>	<b>113,539</b>	<b>288,526</b>	<b>304,742</b>	<b>35,450</b>	<b>126,507</b>	<b>2,410,765</b>
<b>EXPENSES:</b>													
CLIENT COST CASH ADVANCED	13,533	44,742	26,348	(16,306)	31,912	26,536	(17,426)	33,015	21,068	15,266	49,405	21,770	249,863
OFFICE SUPPLIES	5,054	5,983	5,080	10,299	8,118	11,066	12,361	9,371	3,726	5,203	3,828	4,105	85,193
OFFICE EQUIPMENT	2,508	3,588	6,103	5,026	11,586	9,375	5,052	15,463	5,113	2,744	380,133	4,457	451,178
TRAVEL	(865)	(251)	(11)	(1,547)	(59)	3,941	3,956	2,974	(842)	4,405	1,402	1,536	14,427
TRAVEL - B.W. BOND	(296)			(180)	(48)	(2)	(177)	(3)	(10)	(99)	(8)	(15)	(838)
TRAVEL - K. A. DERHAM	(113)		(3)	(51)	(13)		(11)		(64)	(11)			(266)
TRAVEL - R. E. LEVY													
TRAVEL - C. M. DELANE													
MEALS AND ENTERTAINMENT-MIAMI	857	1,675	1,323	14,399	2,583	1,411	2,160	3,266	3,502	4,603	10,569	1,982	48,328
MEALS, ENT. - B. W. BOND													
MEALS, ENT. - K. A. DERHAM													
MEALS, ENT. - R. E. LEVY													
MEALS, ENT. - C. M. DELANE													
MEALS AND ENTERTAINMENT-WASHINGTON			19	30	11	201,579	66				40		201,744
MAIL, COURIER, EXPRESS-MIAMI	(1,150)	(240)	(10)	(1,370)	(849)	915	131	938	485	258	242	(183)	(834)
MAIL, COURIER, EXPRESS-WASHINGTON	(6,434)	(979)	(22)	(10,091)	(10,271)	(4,498)	(12,906)	(2,345)	(6,540)	(4,923)	(758)	(1,581)	(61,456)



The control panel allows you to select profit and cost centers or financial and analytical reports based on specific criteria.

## PERFECTLAW® ALL-IN-ONE® SOFTWARE

Corporate Headquarters  
PerfectLaw® Software  
6100 Blue Lagoon Drive  
Suite 350  
Miami, Florida 33126

Phone: 800.749.6200  
Email: [info@perfectlaw.com](mailto:info@perfectlaw.com)  
Web: [www.perfectlaw.com](http://www.perfectlaw.com)